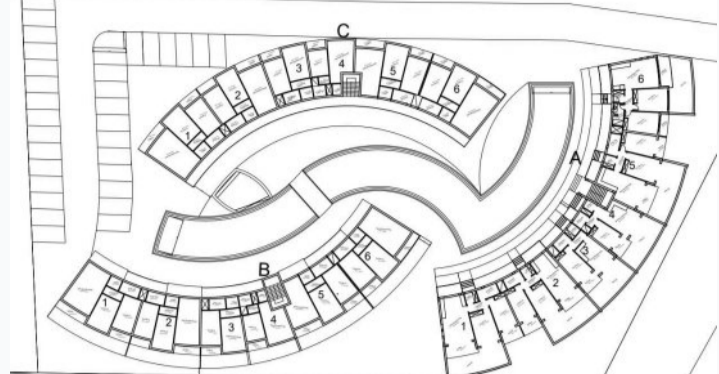


Luna residential complex

Location **Iskele, Long Beach**



About the project



Developer	Latifoglu Development
Start of sale	01.09.2022
Key handover	2025
Houses/blocks	3
Building floor	1 2 Min Max
Units total	8 - 1+1, 22 - 2+1

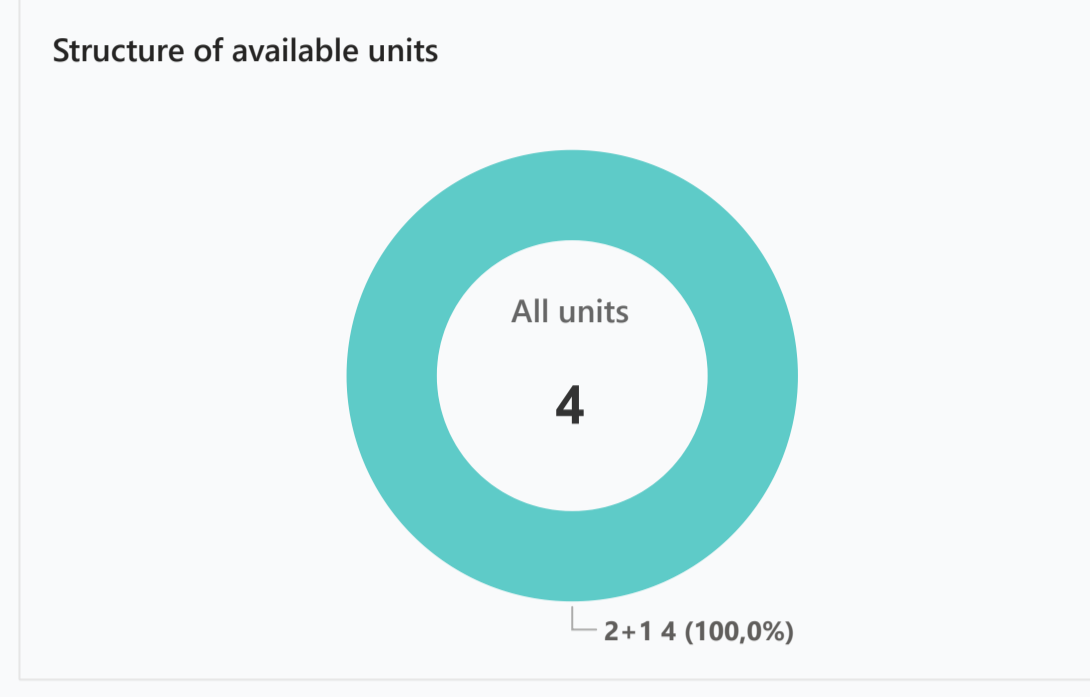
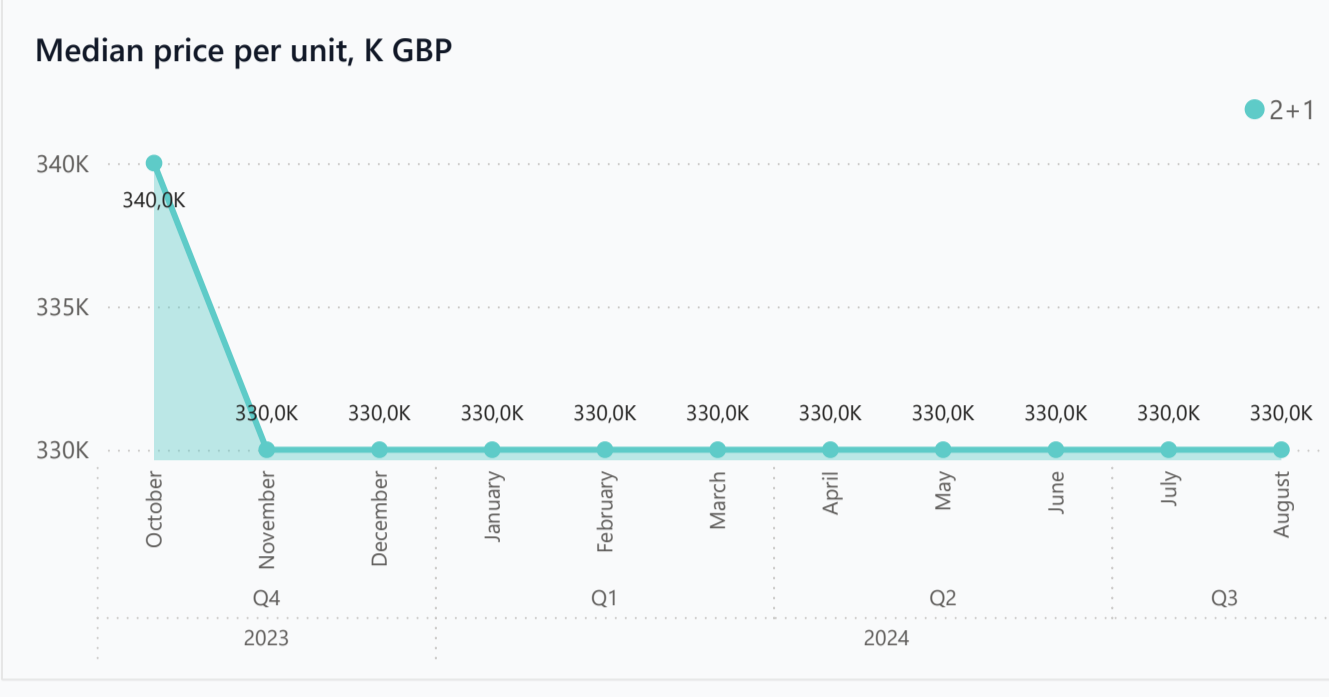
Distance to the sea - 100 m
 Distance to key locations:
 50 meters to Long Beach. Supermarket 3 min. Pharmacy 5 min.

Luna – an exclusively unique project located in just meters to Long Beach. The main privilege of being a resident at Luna is its easy access to the golden sandy beach of the Mediterranean and a fascinating view of the sea. Various facilities such as 6 kilometers bicycle and walking path, children's playgrounds, cafes by the beach, picnic and recreation areas and many more will also be available for communal use.

Complex infrastructure

- Bar
- Closed territory
- Kid's playground
- Kid's pool
- Open pool
- Security Camera System

Available units **4** / 33 total



Plans

- 85 m² - 2+1+ 65m² Terrace
- 85 m² - 2+1+ 22,5m² Garden
- 95 m² - 2+1+ 80m² Terrace
- 95 m² - 2+1+ 25m² Garden



Payment plans

Deposit (non-refundable) 5000 GBP for a month

Option	Down payment	Installments months	Discount	Offer
Option 1	40 %	36	-	-
Option 2	-	-	-	-
Option 3	-	-	-	-
Option 4	-	-	-	-

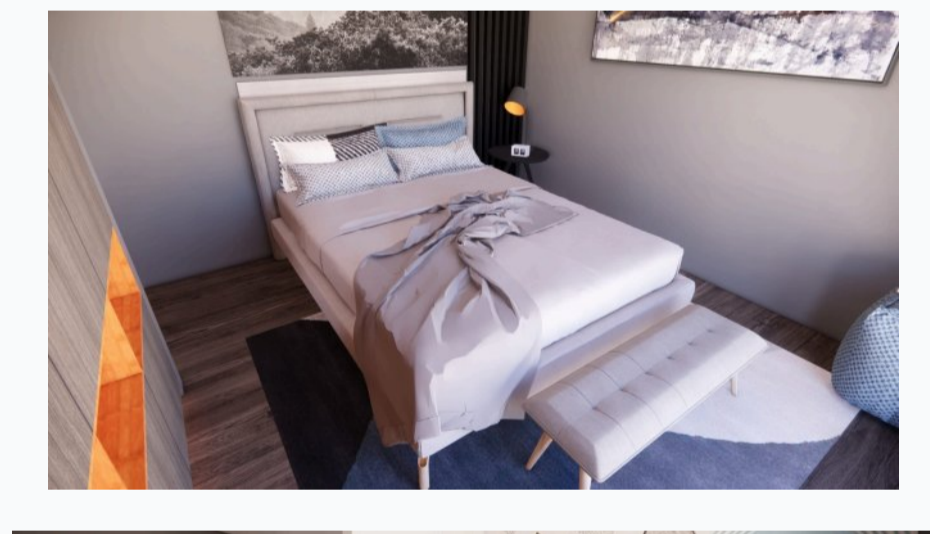
Special offer	Fully furnished design package	Rental guarantee
---------------	--------------------------------	------------------

Trafo (Blank) GBP	Resale -	Maintenance fee -	Rental services -
-------------------	----------	-------------------	-------------------

Details

Bedrooms	Subtype	Block	Unit №	Floor	View	Bathroom	Internal area, sq. m	Balcony/ Terrace, sq. m	Rooftop terrace, sq. m	Garden, sq. m	Gross covered area, sq. m	Current price, GBP	Price per sqm, GBP
2+1	Flat	A	A02	0							94	330 000	3 511
2+1	Flat	A	A05	0							98	330 000	3 367
2+1	Flat	A	A01	0							106	330 000	3 113
2+1	Flat	A	A12	01					13		101	350 000	3 465

Interior specification



- Ceramic flooring
- Double glazed windows
- Laminate flooring in the bedrooms
- Underfloor heating

Exterior specification



- Private Garden
- Private pool
- Terracing with inbuilt lighting & power sockets

Location of complex

